

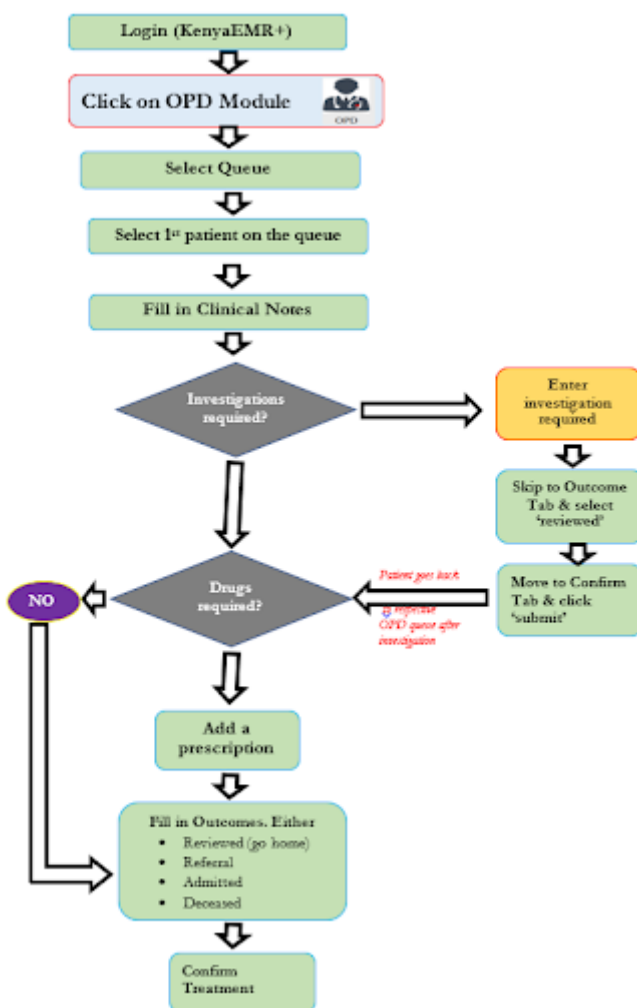
# Outpatient Department (OPD) Module

The Outpatient Department, interfacing with several departments, is where patient management is done. It is accessed by clicking the 'OPD' icon shown below on the 'home' screen.

<insert screenshot>

## OPD Workflow

The diagram below shows the Out-Patient Department Module Workflow



Revision #2

Created 20 November 2023 13:07:43 by Admin

Updated 21 November 2023 07:43:07 by Admin