

Getting Started on KenyaEMR+

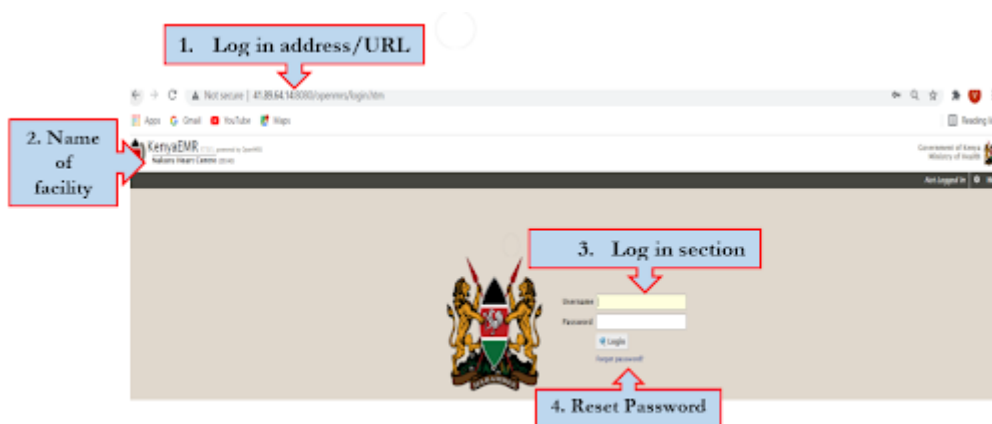
- [Login](#)
- [KenyaEMR+ Workflow](#)
- [Editing user profile](#)

Login

Sections below detail how to access and log in into KenyaEMR+

Login Screen Features

KenyaEMR+ Login screen appears as below. Pay attention to the four key features below;

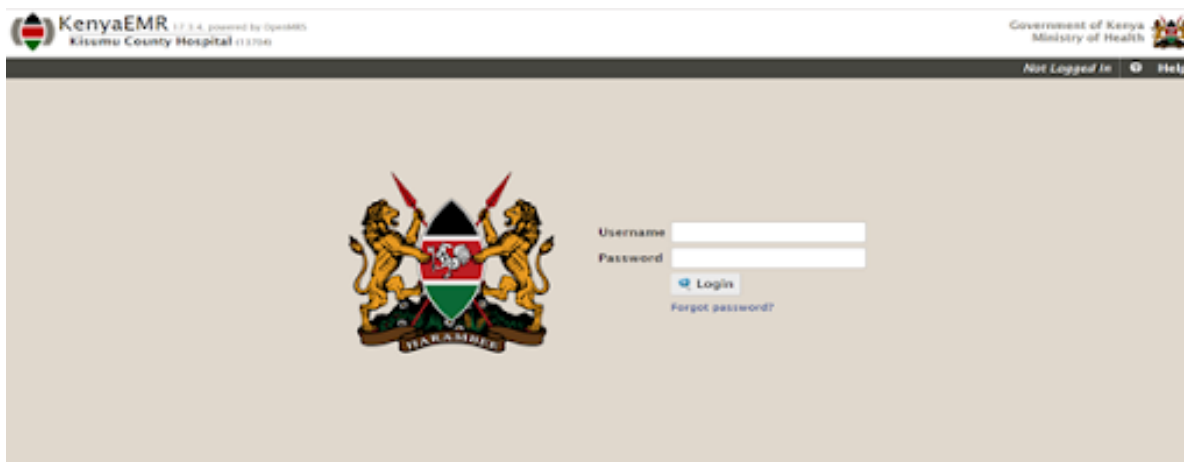


1. Login address/URL - this is the link you will follow or paste on a web browser to open KenyaEMR+ system
2. Name of the facility - the name of your health facility will display here
3. Login section - you will enter your login credentials here
4. Reset password - you will click here to reset/recover your password if you have forgotten

Login steps

To log into the KenyaEMR+ system, follow the steps below;

1. Follow the link <http://41.89.94.100:8080/openmrs/kenyaemr/userHome.page> (HealthIT test environment) or <http://localhost:8080/openmrs> on a local installation on your browser.



2. Enter your username

3. Enter your password

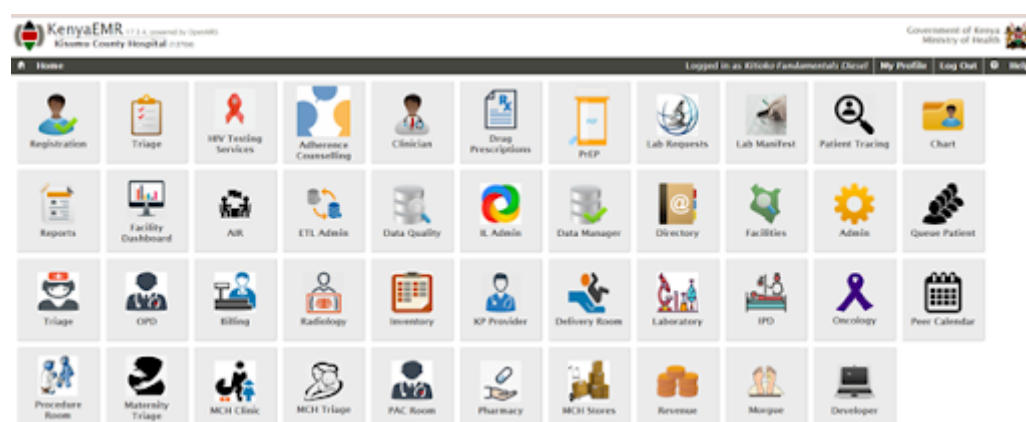
4. Click on 'Login' icon

Once you click the 'Login' button the Home page screen will appear.

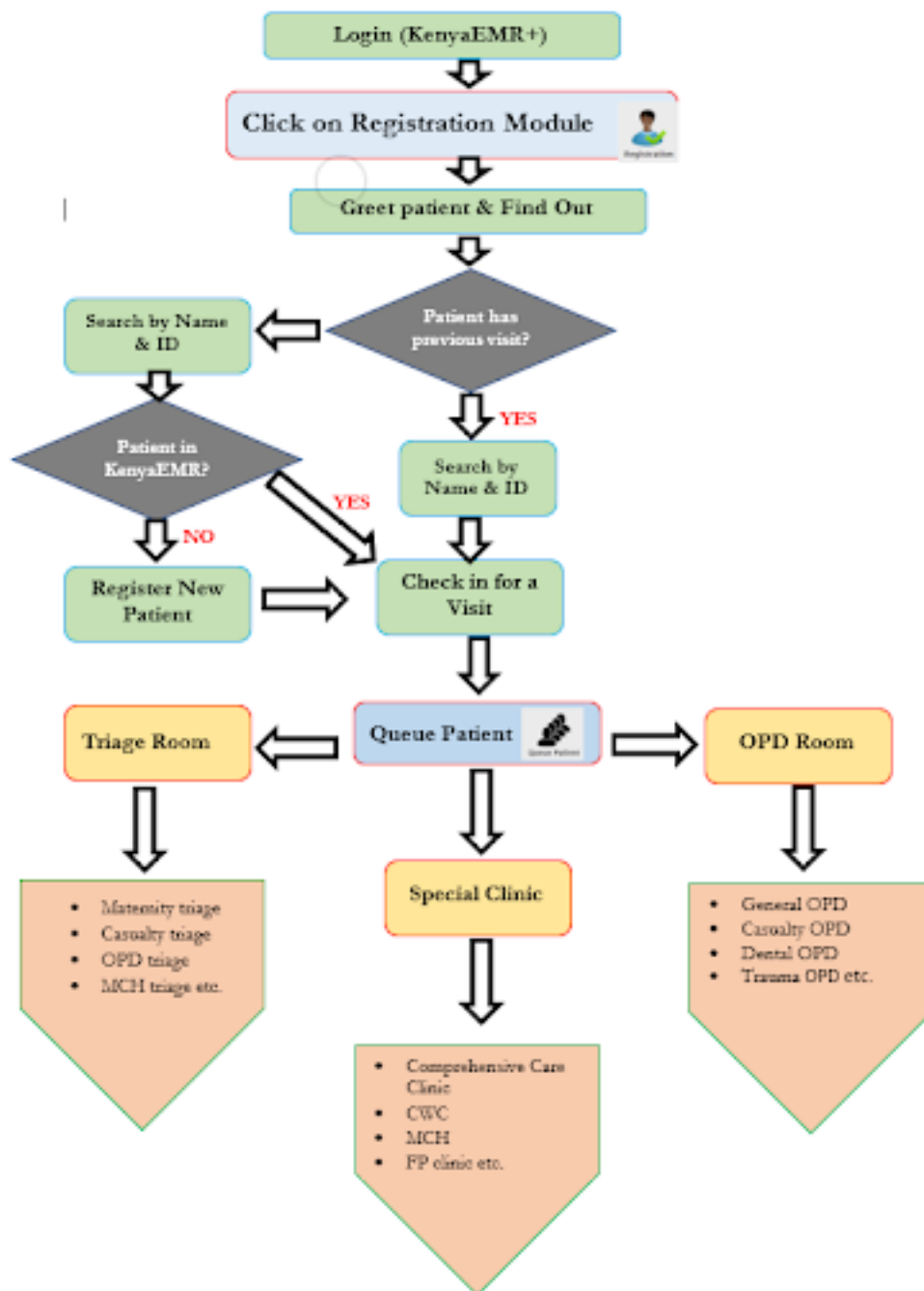
1. If you do not have login credentials, talk to the KenyaEMR+ champion or facility in-charge in your facility.
2. If you have forgotten your password, click on 'Forgot password?' on the Login screen and follow prompts to reset it.

Homepage

This page consists of all the modules available within the system. Each module can be accessed by clicking on its respective icon. Users will be able to only view and access the modules which they have been granted rights to access. The home page screen appears as below only showing modules a user has been granted access to.



KenyaEMR+ Workflow



Editing user profile

Users who have been granted access can edit their own profile and change password by clicking on 'My Profile' tab on top right of your screen as shown in the screenshot below;

<insert screenshot>

Once you click on 'My Profile' icon, the screen below will appear and it will enable a user do the following by clicking on respective sections;

1. Change password
2. Change secret question
3. Edit name, gender and contact details

<insert screenshot>

Once you complete editing your profile, click on the 'Home' icon at the top left of your screen to go back to the modules.

<insert screenshot>